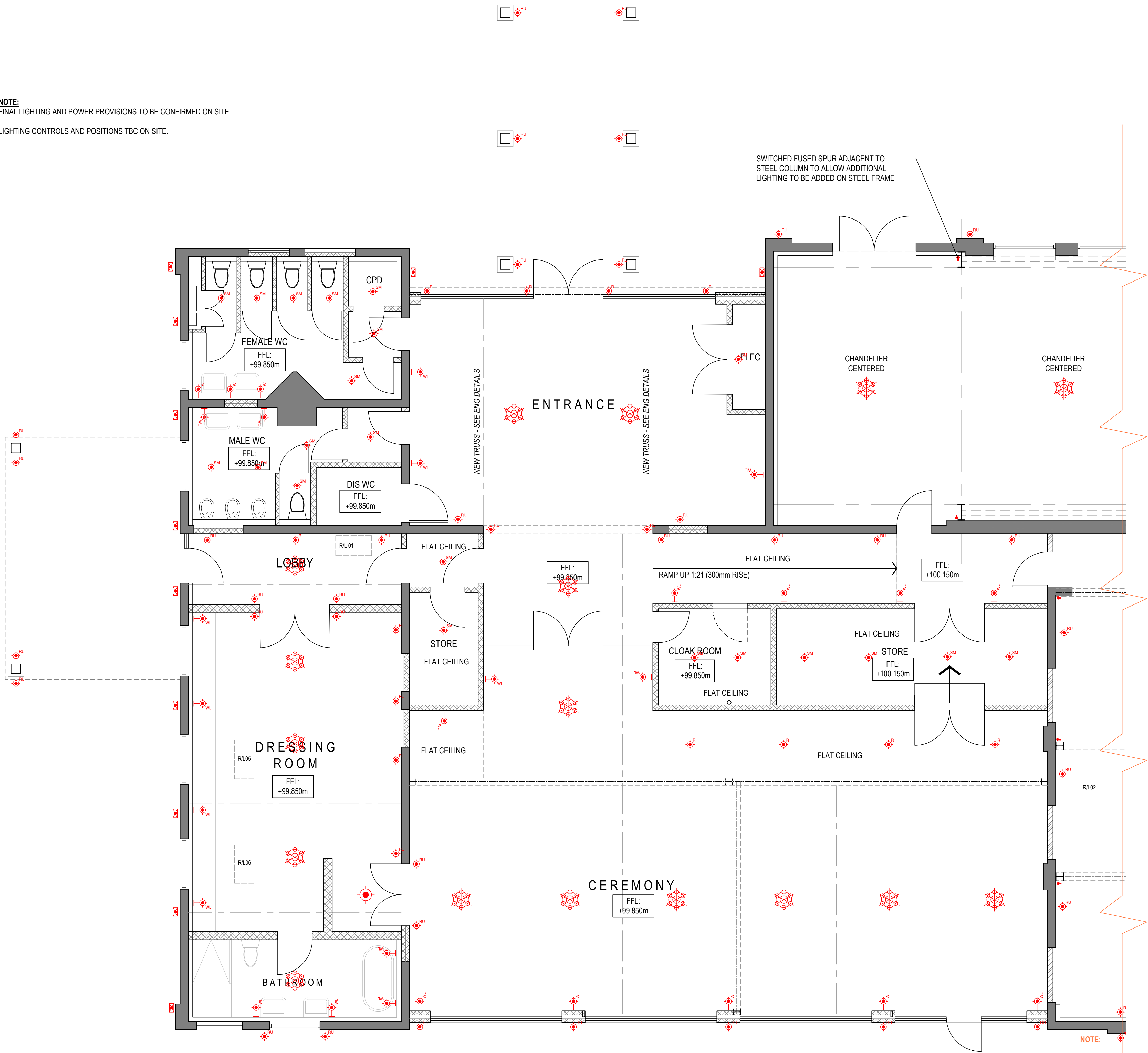


NOTE:
FINAL LIGHTING AND POWER PROVISIONS TO BE CONFIRMED ON SITE.
LIGHTING CONTROLS AND POSITIONS TBC ON SITE.



MECHANICAL & ELECTRICAL LEGEND

- Single 13 Amp switched socket outlet
- Double 13 Amp switched socket outlet
- Fused 13 Amp outlet
- Socket c/w neon indicator switch above worktop
- Shaver socket
- Pendent light
- Surface mounted light
- Recessed downlighter
- Directional recessed downlighter
- Wall mounted lighting point
- Wall washer lighting point
- Wall mounted picture light
- External wall mounted light
- External bollard light
- Recessed uplighter
- Uplighter
- Chandelier
- LED batten light
- LED track light
- Wall mounted flush light switch
- Wall mounted flush light switch - dimmable
- Wall mounted flush light switch ~ two way
- Wall mounted flush light switch ~ intermediate
- Ceiling mounted pull cord switch
- Door switch
- Passive infra red detector
- Fused spur
- Cooker outlet
- TV coaxial aerial socket outlet
- HDMI Wall mounted
- "Plug in" telephone socket outlet
- Data Point - Floor Mounted
- Data Point - Wall Mounted
- Doorbell
- Doorbell sounder
- Service bell
- Service bell sounder
- Smoke detector ~ mains operated & connected
- Heat detector ~ mains operated & connected
- Combined heat & smoke detector ~ mains fed & connected
- Thermostat
- Mechanical extractor fan ~ 6 litres per second
- Mechanical extractor fan ~ 15 litres per second
- Electric meter
- Gas meter
- Fuse board
- Radiator
- Heated towel rail
- Recessed stereo speaker
- Outside Tap
- Electric Vehicle Charge Point
- Underfloor heating manifold
- Underfloor heating zone c/w reference

Revisions
Project
BARN CONVERSION
TO WEDDING VENUE
BLUEFIELD BARNS
APETHORPE

Drawing
**FLOOR PLAN
MECHANICAL & ELECTRICAL**
PROPOSED

**Harris
McCormack
Architects**
harrismccormackarchitects.co.uk

ArchHaus - Peterborough Road Wansford PE8 6JN
(01780) 433 334 architects@harrismccormack.co.uk

Date	Scale	Drawn
OCT 2020	1:50 @ A1	
Job No.	Drawing No.	Revision
19-824	(50)001	A

READ IN CONJUNCTION WITH DWG. (50)/002

This drawing is the copyright of Harris McCormack Architects. The contractor is to check and verify all dimensions on site before proceeding with the works. If you are in doubt with any of the information on this drawing, ask for it to be verified. Do not scale from this drawing.

To be noted